



»www.990adventure.com



What awaits Adventure riders in Iceland? ? Pure adventure. Incredible countryside, into which only a few paved roads stray. Endless dirt tracks ending abruptly in riverbeds. Uninhabited expanses and a vibrant capital. The freezing cold glaciers and icebergs in eternal contrast to the geysers and hot springs. The beginning of a journey into the unknown.

ICELAND

DAYS OF FREEDOM.

DAYS OF FREEDOM.

ADVENTURE 2011



KTM
AUTHORIZED DEALER

KTM POWERPARTS
KTM POWERWEAR
KTM ADVENTURE TOURS

* 3 2 1 2 3 3 0 6 8 *

© 2010, KTM-Sportmotorcycle AG

LEGAL DISCLAIMER
Should not be emulated.
The riders illustrated are professional motorcycle riders. The photos were taken on a closed racing circuits or closed roads. KTM draws to the attention of all motorcycle riders that they should abide by all traffic laws and regulations, that they should wear the recommended protective clothing and always ride in a responsible way.

The motorcycles advertised in this folder are only suitable for use in normal traffic in the homologated version. When purchasing a motorcycle, it is necessary to clearly observe all safety aspects and appropriate warnings. The motorcycles illustrated are in part equipped with extras that are subject to additional costs. All information concerning delivery, appearance, performance and weights and measurements of the vehicles comply with KTM's sales program in Austria at the time of printing and all information is supplied without obligation and may be subject to alteration at any time. Please note that model specifications can be different from country to country. In order to guarantee riding safety following the installation of superstructural parts to the rear of the motorcycle, such as top or side cases, it is of the utmost importance to observe the speed limits specified in the user manual.

KTM-Sportmotorcycle AG
5230 Mattighofen, Austria
www.ktm.com

www.ktsdesign.com

Photos: P. Mathis, P. Fiedl, H. Mitterbauer

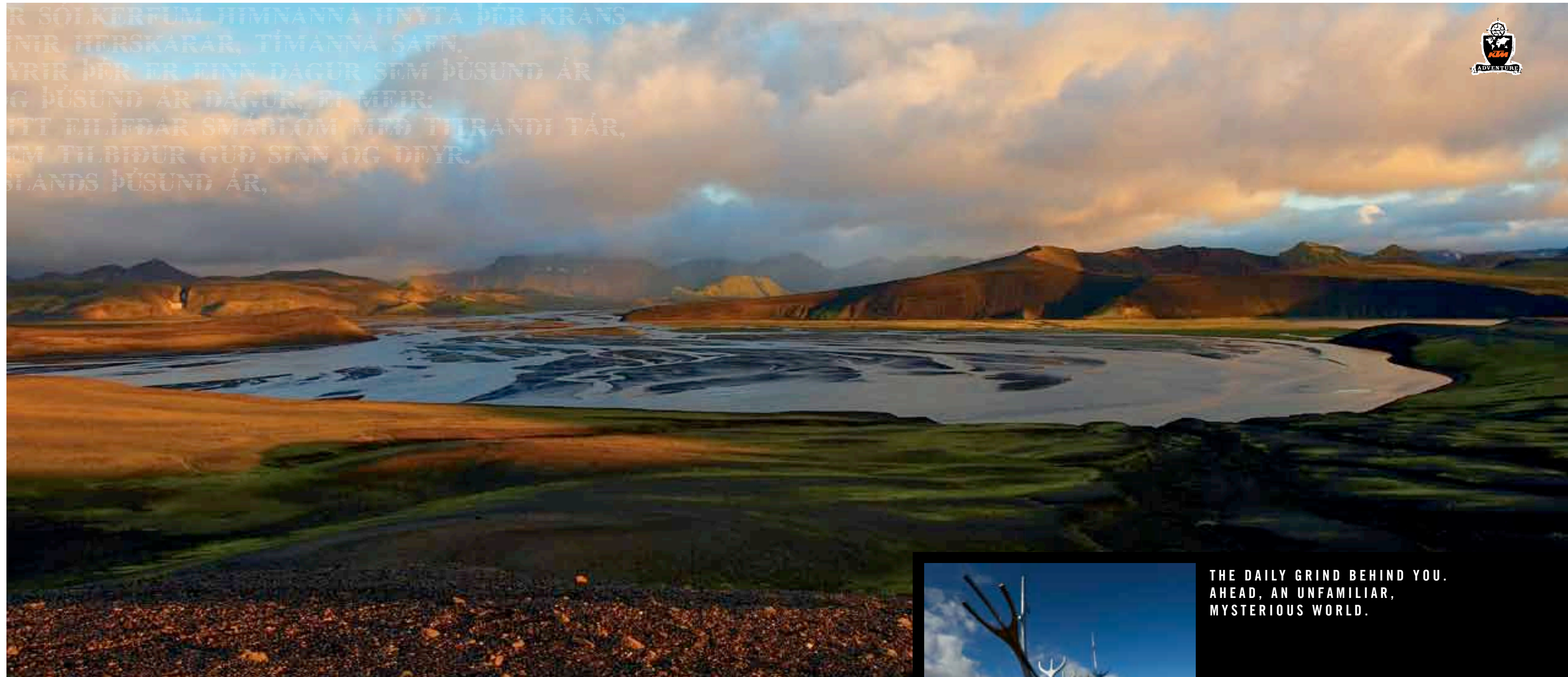
ART.NR.: 3.212.29588



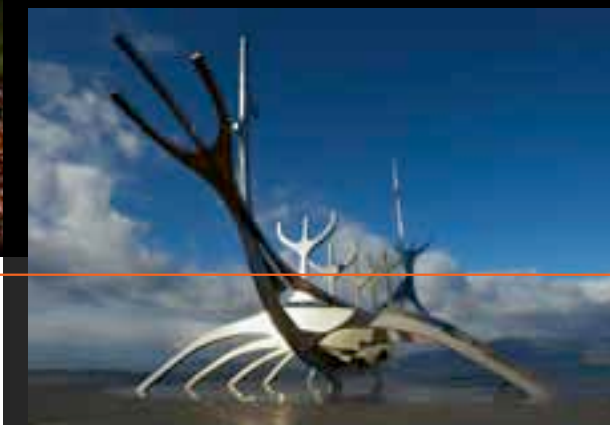
In particular, the south of Iceland boasts an abundance of destinations that should not be omitted from any Adventure tour itinerary. Unique natural phenomena under the light of the midnight sun and the aurora borealis, combined with pure enduro riding pleasure.



1 Reykjavik: Iceland's capital is home to 120,000 inhabitants, more than a third of the country's total population. What's more, the city only covers 0.5% of the island's surface area of 103,000 km². Around 200,000 people now live in the catchment area surrounding the metropolis. It's no surprise, then, that you can roam for hours outside the world's most northern capital city without meeting a single soul. Reykjavik has much to offer. Art, culture and many sights, but also an extraordinary service in winter. Hot water from volcanic depths is used to heat the roads when temperatures fall below freezing, at the same time supplying households with domestic hot water. 2 Vik í Myrdal: The southernmost settlement Islands may be short of tourist highlights, but its beach is magnificent. This stretch of dark lava sand backed by the renowned black basalt sea stacks ranks among the 10 most beautiful beaches on Earth. 3 Landmannalaugar: A must for every Iceland adventurer. However, the unique interplay between green moss, white snow and slopes coloured red-brown or blue-grey by volcanic ash is not a sight seen by everybody. Nature has bestowed the rocky road to this destination with gravel, lumps of lava, potholes and river-crossings. A journey to the end of the world for normal vehicles; the greatest of pleasure for Adventure riders. 4 Jökulsárlón: Icebergs up to 15 metres in height drift across Iceland's largest and best known glacial lake. A kaleidoscope of ice crystals and volcanic ash that has served as the set for two James Bond films. 5 Gullfoss: The most famous waterfall in Iceland offers an impressive natural spectacle. Water shoots in two sensational cascades over 32 m down into a narrow gorge. Unbelievable, but true: in the 1920s, this wonder of nature was almost brought to a halt when plans were made to use the waterfall for generating electricity; a project that was only prevented from going ahead at the last minute. 6 Keflavik: Situated in the south-western part of the island, Keflavik is only 280 km from Greenland. It is home to the country's international airport, which is connected to the capital by a 40 km link road. Every night – that can last for up to 22 hours in Iceland – this traffic artery is lit by electricity from geothermal power stations. 7 Geysir: Earthquakes in this region in the 13th century gave rise to an eruptive hot spring, which was named after the area, "Geysir". A description that has been adopted throughout the world for this type of natural phenomena. Until 1915, the Great Geysir regularly threw spouts of water up to 60 metres into the sky. Then, all of a sudden, activity stopped. Only since another earthquake in the year 2000 has it been erupting again, albeit irregularly and only up to heights of 10 metres.



Every sunrise heralds the start of a new adventure. Nature in all its glory and seemingly endless expanses, waiting to be discovered.



**THE DAILY GRIND BEHIND YOU.
AHEAD, AN UNFAMILIAR,
MYSTERIOUS WORLD.**

Any attempt to describe Iceland in comparison with other places, quickly and inevitably finds its limitations. Iceland is incomparable. Mile after mile, the island demonstrates its uniqueness, be it in geology, climate, flora, fauna or natural beauty. With experiences, impressions and countless routes, made for you and your Adventure.



ANNA HNYTA ÞEK KRANS
MANNA SAFN.
VÉR SEM HÖSUNDI ÁR
, ÞI MEIR:
ÖM MÍÐ TITRANDI TÁR,
NN OG DEYR.

Road markings? Only where necessary ... with glaciers in your rear-view mirror and geysers ahead. Welcome to Adventure Island!



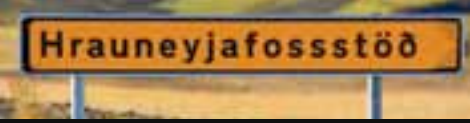
The term "main road" finds a completely new meaning here. But beyond the next bend, that's where it really starts.



Nature determines which route you take. Signposts to nowhere – meant only for adventurers, as such a junction surely marks the end of the road for normal vehicles.

Ó,
LANDS! Ó, LANDS V
VÉR LÖFUM ÞITT HEILAG
ÚR SÓLKERFUM HIMNANT
ÞI
MÍNIR HERSKARAR, TÍMA

THE BEGINNING AT THE END OF THE WORLD.

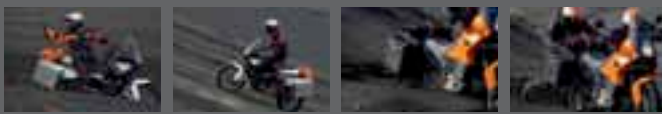


ADVENTURE 2011

Any attempt to explore Iceland on paved roads soon meets with the limits this country sets. Two thirds of all traffic arteries are practically unsurfaced and of the 4,331 kilometres of real roadway, over a thousand are attributable to the ring road running around the coast. As an Adventure rider, you only make use of this, Iceland's longest road covering 1,336 km, as the quickest means of arriving at the next turnoff into the wilderness. As a warm-up exercise for the solitude, wild countryside and real enduro challenges.



Sometimes, even an Adventure can go no further. Then it's time to take a break and enjoy the view. Admire the magnificent scenery and gear up for the next challenge.



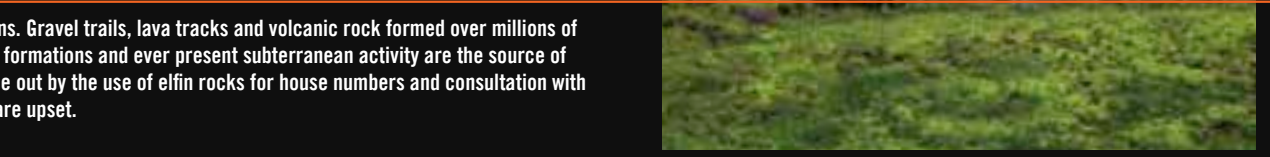
Even the best of bikes can get stuck when an angry elf wraps itself around the rear wheel – or was it just the deep volcanic ash?

DS VORS GUD!
STILAGA NARN!

A COUNTRY FULL OF SECRETS.

EM ÞÚSUND ÁR

Take a turn into Iceland's interior, the roads come to an end and the adventure begins. Gravel trails, lava tracks and volcanic rock formed over millions of years form a fascinating enduro scenario. The wide variety of bizarrely shaped rock formations and ever present subterranean activity are the source of an unrivalled mythology. Around half of Iceland's population believes in elves – borne out by the use of elfin rocks for house numbers and consultation with experts before starting any construction work, just to make sure that no creatures are upset.



Black lava trails, rocks covered in green moss and sparse vegetation – enduro travel at its best.



Further along the coast. In the black Adventure paradise tinged with green.



Swathes of mist – a constant companion in the mountains.



No adventure without the proper equipment. And, if nothing else, in Iceland this has to be waterproof!



LANDS VO
R LOFUM
GA, HEILAG
SOLKERF
NNA HNYT
ANS
VIR HERS-
RAR,
MANNA SAF
RIR ÞÉR FI
GUR SEM
DÚSUND A
MEIR:
TT BILJÓDA
ÁBLÓM ME
FRANDI TÁ
M TILBIDU
IN OG DEY
LANDS ÞÚS



This isn't burnout; it's raw, unfiltered forces of nature. A mighty conduit from the depths guides steam to the surface together with loads of energy that has been put to use by Iceland for ages.

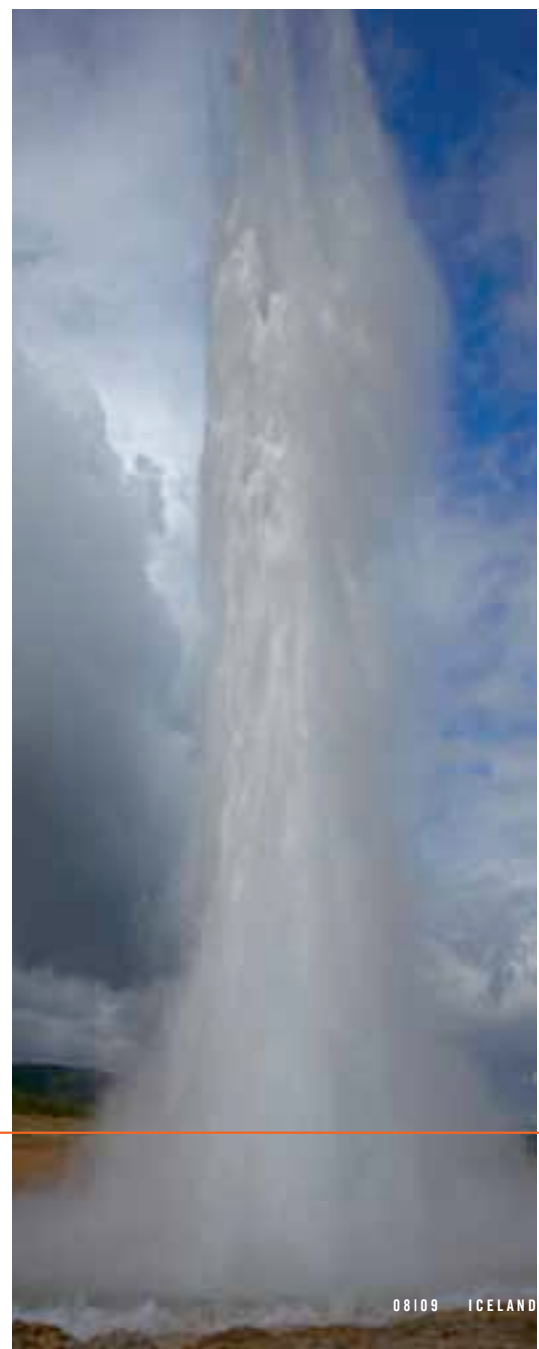
Although the Great Geysir only retains a sixth of its original eruptive force, it remains an impressive indication of the forces lying dormant under the Earth's surface.

Rain may be a frequent companion in Iceland, but water is omnipresent here in all three physical states. As ice in glaciers and icebergs; in fluid form in rivers, lakes and geysers, as well as in steam generated by volcanic activity. Energy extracted from this subterranean heat source is utilised in geothermal power stations and hot water from underground depths is even used to keep streets in the capital free of ice and snow in winter.

WATER FROM BELOW.

WATER FROM ABOVE.

"If you don't like the weather, then hang on for ten minutes!" This Icelandic expression can be taken quite literally. The weather not only changes suddenly; it can go from one extreme to the other in a matter of minutes. On average, it rains or snows for 212 days a year and Iceland suffers no shortage of water in other forms either. For example, Europe's most powerful waterfall is to be found here – the Dettifoss – along with the most famous on the island – the Gullfoss, where water thunders impressively over two spectacular cascades, plunging 32 m into a narrow gorge. Likewise ever present are the many glaciers and glacial lakes. Incidentally, these can be tremendously dangerous in the event of a volcanic eruption. In 1996, an eruption caused a glacial lake outburst, the flood wave from which ripped away part of the ring road, thankfully closed at the time as a precautionary measure.





HMNANNA HNYTA ÞÉR KRANG
TIMANNA GATN.
N DAGUR SEM ÞÚSUND ÁR
GUR, EÍ MEIR:

Á ÞÍOM MÍÐ HIRANDI GÁR
SINN OG MÍÐ



The road is clear for all enduro travellers who can never have enough of gravel.



WHERE THE STREETS HAVE NO NAME.

If you decide to undertake an Icelandic adventure, you should bear in mind that, along with glaciers and icebergs, heralds of the nearby Arctic, solitude will be your constant companion. Only a third of the population lives outside Reykjavik, so it can easily happen that you'll drive for hundreds of kilometres without catching sight of more than a couple of sheep or horses. However, this is more than compensated by the unique landscape with its seemingly endless gravel tracks, perfect for drifting.

A brief meeting between slowly drifting icebergs and the barren wilderness. The road carries on, straight through a world made to measure for a KTM Adventure.

TOUR DAILY ROUTINE CAPTION.

Those who commit themselves totally to an Icelandic adventure must be prepared for everything. Tricks played by the weather gods, water from above and below, cold snaps and even snow are not uncommon at higher altitudes. If nothing else, this shows once more that, with the right equipment, there is no such thing as "bad" weather!



A place in the sun? Or in the freezer? Icebergs on the lake would appear to indicate the latter.



Should you run out of water, an ice-cold supply is on hand at all times.



A new days begins in the far north with a rather frugal breakfast buffet. But at least it's hot!



Five minutes later. The sun loses another battle with the superior strength of the dark clouds.

BIDUR GUD SINN OG DEYR.

BIDUR GUD SINN OG DEYR.

BRENNANDI, BRENNANDI SÁI,

TIL KYNS, OG VÉR KVÖKUM VORT HELGASTA MÁL.

ND ÁR, ÞVI ÞU ERT VORT EFNASTA SKIÓL.

TILBJÓST VORT FORLAGAHJÓL.

HITNA VÍR SKÍNANDI SÁI.



Life reawakens. Who needs a lovely soft bed and a solid roof over their head when the alternative is a unique night under the open sky.



Everything you need for freedom and adventure. The Adventure luggage boxes are hotel, wardrobe and larder all-in-one. Loads of space and safety – indispensable for an Iceland tour on two wheels.

A TASTE OF ADVENTURE.

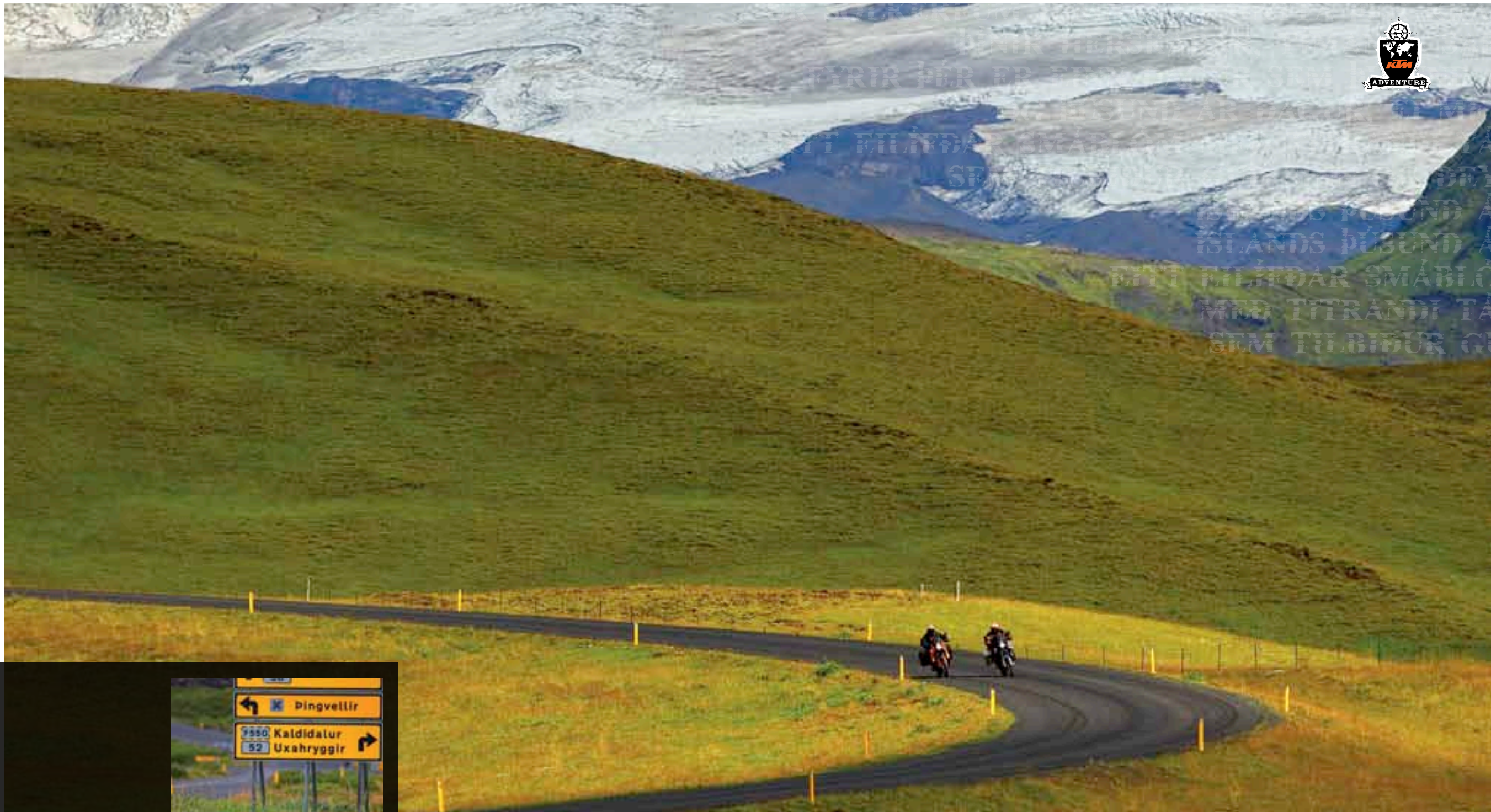


You wake up. You are greeted by an icy wind as you crawl from your sleeping bag and leave the tent. Your eyes take in a view that could have originated from another world. Icebergs drift past on the near freezing surface of a glacial lake and water from ice formed thousands of years ago is coming to the boil in a pot for your morning mug of tea. Those razor-sharp volcanic rocks from the previous day, the punctured inner tube – all firmly in the past. Today is a new day for a new adventure.

ADVENTURE 2011



The journey, as ever too short, takes adventurers from one picture postcard subject to the next and you never know what is really more enjoyable – the destinations or the trails themselves.



TYRIR ÞÉR ER...
EIT MILJÓDAR...
ISLANDS ÞÚSUND...
EIT MILJÓDAR SMÁRÍG...
MÉR TITRANDI TA...
SEM TILBÍÐUR G...

THE SUPREMACY OF NATURE.



Past the gigantic Vatnajökull glacier, the journey continues on secluded dirt roads. Magnificent stretches, where you always need to carry a sufficient supply of fuel. For filling stations are a rarity and refuelling is an experience in itself. The first time you stop at a locked and deserted fuel pump, you just sit there and wait in disbelief. But you need to beep your horn to prompt the attendant to leave his house across the road and see to your needs. That's Iceland for you.

Iceland not only has marvellous contrasts to offer. Above all, this country teaches respect for the superiority of nature.



R LÖFUM ÞITT HEILAGA, HEILAGA NARN!

Even when the sun has been kind to you, there's no way of avoiding getting wet. Around the next bend and the track comes to an end. Once more, the Adventure has to fight its way unstoppably through knee-deep water.



Ó, GUD VORS TIAN
 Ó, LANDS VORS
 VÉR LÖFUM ÞITT
 HEILAGA, HEILAGA
 NARN!
 ÓR SÓTKERFUM HIMNAN
 HNÝTA ÞÉR KRA
 ÞINIR HERSKARAR, TÍMAN
 SA
 FYRIR MÉR ER ÞI
 DAGUR SEM ÞÚS
 OG ÞÚSUND ÁR
 GUR, ÞI MÍ
 ÞITT ÞIÞIÞI

Whether it be a river crossing or remains of the last downpour – there are more than ample opportunities to test the suitability of your machine for water in Iceland.

NOT ONLY STILL
 WATERS RUN DEEP.



Where others turn back, the Adventure really comes into its own. Something absolutely essential in Iceland, because even the best of roads are often strewn with volcanic ash, potholes and river crossings. A ford every few kilometres. Breathe deeply and take a plunge into water that can sometimes be surprisingly warm thanks to the hot springs. Then out of the wet, back to the dry and on to the next destination.

ADVENTURE 2011

ORANGE MODEL 990 ADVENTURE

Attractive and adventurous – the KTM 990 Adventure in the extremely powerful corporate-orange-look.



White splendour. In a classy white finish, the KTM 990 Adventure also calls the tune visually.



WHITE MODEL 990 ADVENTURE

KTM 990 ADVENTURE.

KTM look – the KTM 990 Adventure scores points on all levels. Its powerful appearance in two colours guarantees an image appropriate for the high performance on offer. The LC8 engine delivers loads of torque with impressive traction and together with the bike's minimum weight, extremely light handling ensures unbeatable riding pleasure. Numerous KTM features, such as 210 mm suspension travel, ABS as standard, a clearly laid out cockpit complete with state-of-the-art instrument panel and lockable storage compartment, make the KTM 990 Adventure a perfect all-round companion for every expedition.

ADVENTURE 2011



SEAT

While the more offroad-oriented seat on the R model was set at a height of 895 mm, that on the 990 Adventure is positioned much lower at 860 mm. This reduced height and the lowered profile ensure maximum comfort for both rider and pillion passenger, even on extended expeditions.



COCKPIT

A clearly laid out multi-function device, incorporating a digital speedometer, analogue tachometer, numerous additional functions and indicator lights, provides the perfect overview. Also located here: a 20 mm electric socket along with a pushbutton for the new hazard warning lights.

IMMOBILIZER

All KTM 990 Adventure models are equipped as standard with an electronic immobilizer: Each bike can consequently only be started with the original key, so making operation almost impossible for any unauthorised person.



FUEL TANKS

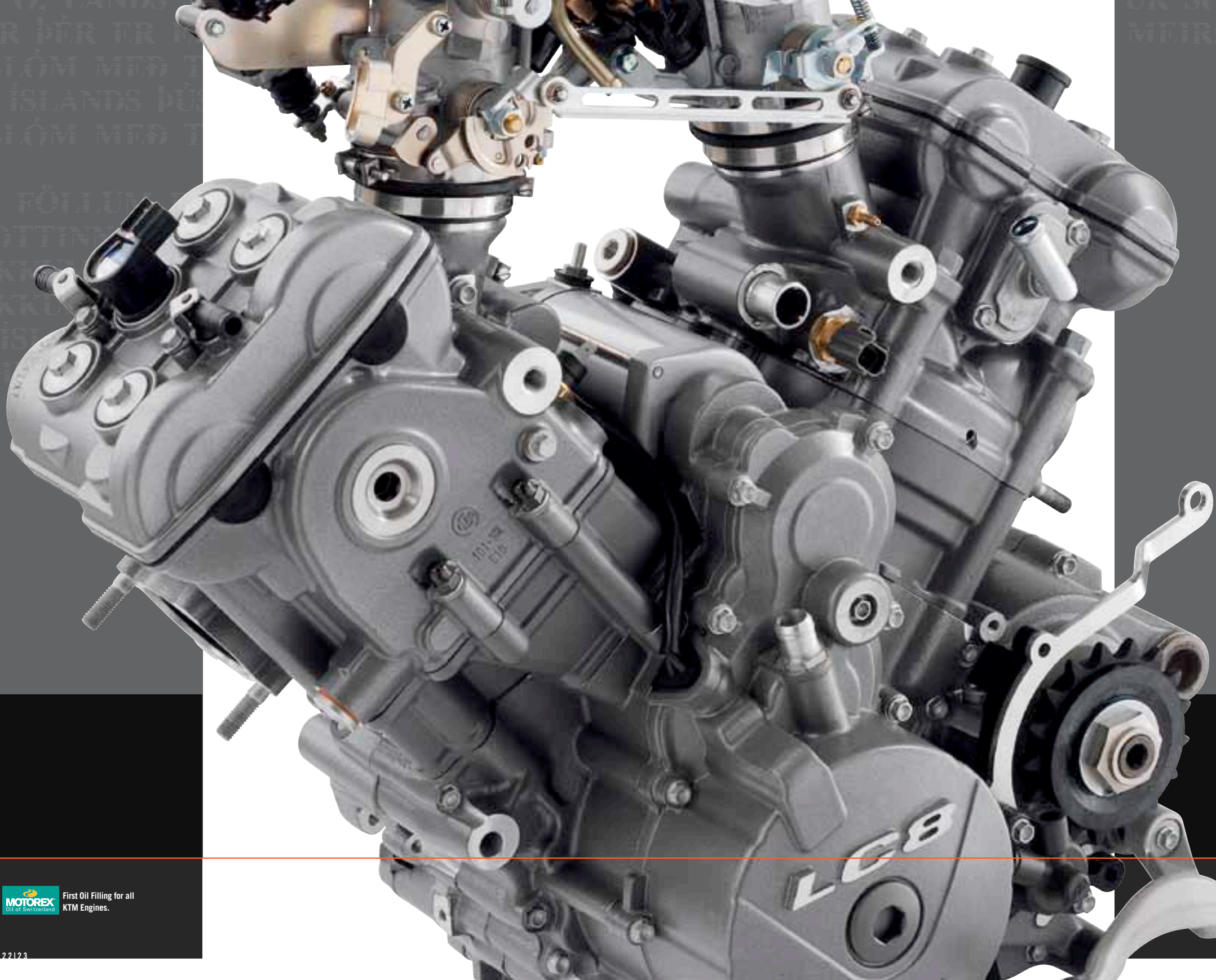
Best possible protection is provided for the two fuel tanks, mounted very low on each side, with integrated fuel pump and a capacity of approx. 20 litres. They are made from unbreakable nylon and fitted with additional plastic protectors just to be on the safe side.

STORAGE COMPARTMENT

The storage space above the two tanks has been designed with a view to optimum functionality. A sliding mechanism enables it to be opened and closed with ease. It is locked quickly and simply with the ignition key using an additional function in the seat lock.

DESIGN AND FUNCTIONALITY IN EVERY DETAIL.

Every single component on the 990 Adventure has been designed for a combination of perfect functionality and impressive appearance. Classy styling, lineal and devoid of any fanciful elements, generates an unrivalled visual appearance that perfectly reflects the enormous performance potential of the Adventure. From the two tanks to the seat and the cockpit to the windshield, this bike represents the perfect combination of form and function in the shape of a powerful Travel Enduro.



CYLINDER HEAD

One important reason why the LC8 engine is able to deliver a high power output of 106 and 115 hp respectively are the high-tech DOHC cylinder heads. Optimising the combustion chamber design has led to more efficient combustion and excellent rideability in the lower load and rpm range. The ports are designed to promote good flow, thereby ensuring optimum charging and outstanding power as a result. An additional benefit: the sturdy construction means that the valves no longer have to be adjusted during the initial service.



CRANK MECHANISM

The crankshaft with lightweight con-rods keeps oscillating masses low, which minimises vibrations. The result: powerful, spontaneous responsiveness as well as extremely sporty engine characteristics.



PISTONS

The 101 mm pistons have been produced in an extremely lightweight design. This, along with the smaller DLC-coated piston pins, has minimised the oscillating masses to benefit response characteristics.



ENGINE MANAGEMENT

The proven engine management system from Keihin regulates the electronic injection system with the focus on optimal behaviour under partial loads. Furthermore, a second throttle valve per cylinder ensures as constant a speed-torque characteristic as possible. Other major system elements are the air-fuel-ratio and idle-speed control system, cold start automation as well as the altitude compensator. All important details for optimum rideability and response.



MULTI-FUNCTIONAL SHAFT

Running centrally between the cylinders, the multifunctional shaft serves as a counterbalance. It acts as a centrifuge for venting the housing, drives both the water pump and the timing chain, and also carries the idle gear for the electronic starter.

THE SOURCE OF NEW POWER.

Pure performance, even better responsiveness and optimum rideability in all areas – these were the objectives KTM engineers set themselves. The result of their efforts not only looks good, but it rides really well too. The 999cc 75° V-twin engine ensures the Adventure delivers tremendous performance. A real display of power for adventurers who know what they want!

ADVENTURE 2011



EXHAUST SYSTEM

The two high-quality stainless steel exhaust silencers don't just score points in terms of their characterful sound. Each pipe contains a regulated catalytic converter, effectively reducing emissions to EURO III levels.

FRAME

The monocoque space frame made from chrome molybdenum is the most stable – and at 11 kilograms, also the lightest – construction on the market. A guarantor for simple handling and outstanding directional stability. The robust aluminium rear frame is designed for mounting the KTM luggage system, including corresponding loads, as well as a top case.

WP FORKS

Damping elements on the Adventure speak for themselves: 48 mm WP Upside-Down forks in a new colour scheme with fully adjustable rebound damping and compression damping settings, as well as variable spring preload – for maximum comfort and the greatest degree of directional stability.

SUBFRAME

The robust aluminium rear frame is designed to mount the KTM luggage system and a top case.



ABS

A state-of-the-art Bosch anti-lock brake system with two independent control circuits guarantees shortest possible braking distances for the 990 Adventure along with the highest level of safety. Off-road performance is also impressive with exceptional control properties, although ambitious riders may choose to switch off the system, as and when required, with the simple press of a button.



WP SHOCK ABSORBER

The fully adjustable WP-PDS shock provides for sufficient reserves in every situation. Thanks to hydraulic spring preload, it is possible to adapt it perfectly to the respective load by means of a flip-out adjustment knob. Suspension travel on the 990 Adventure is impressive at 210 mm, whilst the 990 Adventure R offers a whole 38 mm extra and sets the standards with an incredible 248 mm.

CENTRE STAND

All Adventure models from model year 2011 benefit from the revised centre stand kinematics, which make child's play of jacking up even a fully laden Adventure.

BRAKES

Top braking performance is guaranteed by the Brembo system – equipped at the front with two twin-piston floating callipers and both 300 mm brake discs mounted on floating bearings. The same applies to the rear wheel, where a twin-piston floating calliper is applied to a 240 mm disc. Oh yes, and the 990 Adventure is equipped with ABS, both front and rear, as standard equipment!

BLACK MODEL 990 ADVENTURE R



RADICAL AND TRENDSETTING. KTM 990 ADVENTURE R.

The 990 Adventure R presents itself as the spearhead of the Adventure family. Overwhelmingly superior, thanks to its powerful engine that delivers unrivalled performance. Outstanding, thanks to the amazingly sporty chassis and 248 mm suspension travel. Superior in appearance too – the most sport-oriented travel enduro sets new standards in styling and attractiveness with its typical R colour scheme and unmistakable design. The 990 Adventure R guarantees an unbeatable total package of pure power and exceptional riding pleasure: off to the next adventure!

TECHNICAL DATA.



MODEL 990 ADVENTURE

MODEL 990 ADVENTURE R

ENGINE		
ENGINE TYPE	2-cylinder, 4-stroke, V 75°	2-cylinder, 4-stroke, V 75°
DISPLACEMENT	999 cc	999 cc
BORE/STROKE	101/62.4 mm	101/62.4 mm
POWER	78 kW (106 hp) bei 8.250 U/min	84,5 kW (115 hp) bei 8.750 U/min
TORQUE	100 Nm @ 6,750 rpm	100 Nm @ 6,750 rpm
COMPRESSION RATIO	11.5:1	11.5:1
STARTER/BATTERY	Electric starter/12V 11.2Ah	Electric starter/12V 11.2Ah
TRANSMISSION	6 gears	6 gears
FUEL SYSTEM	Keihin Electronic fuel injection	Keihin Electronic fuel injection
CONTROL	4 V/DOHC	4 V/DOHC
LUBRICATION	Pressure lubrication	Pressure lubrication
ENGINE OIL	Motorex, SAE 10W-50	Motorex, SAE 10W-50
PRIMARY DRIVE	35:67	35:67
FINAL DRIVE	16:42	16:42
COOLING	Liquid cooling	Liquid cooling
CLUTCH	Wet multi-disc clutch, hydraulically operated	Wet multi-disc clutch, hydraulically operated
ENGINE MANAGEMENT/IGNITION	Keihin EMS	Keihin EMS
CHASSIS		
FRAME	Chromium-Molybdenum trellis frame, powder-coated	Chromium-Molybdenum trellis frame, powder-coated
SUBFRAME	Aluminium	Aluminium
HANDLEBAR	Aluminium, tapered, Ø 28/22 mm	Aluminium, tapered, Ø 28/22 mm
FRONT SUSPENSION	WP-USD Ø 48 mm	WP-USD Ø 48 mm
REAR SUSPENSION	WP-PDS shock absorber with hydraulic spring pre-load	WP-PDS shock absorber with hydraulic spring pre-load
SUSPENSION TRAVEL FRONT/REAR	210/210 mm	248/248 mm
FRONT BRAKE	2 x Brembo two piston, floating caliper, floating brake disc Ø 300 mm	2 x Brembo two piston, floating caliper, floating brake disc Ø 300 mm
REAR BRAKE	Brembo two piston, floating caliper, floating brake disc Ø 240 mm	Brembo two piston, floating caliper, floating brake disc Ø 240 mm
ABS	Bosch two channel ABS	-
RIMS FRONT/REAR	2.15 x 21"; 4.25 x 18"	2.15 x 21"; 4.25 x 18"
TYRES FRONT/REAR	90/90-21"; 150/70 R 18"	90/90-21"; 150/70 R 18"
CHAIN	X-Ring 5/8 x 5/16"	X-Ring 5/8 x 5/16"
SILENCER	Twin stainless steel silencer with regulated catalytic converter	Twin stainless steel silencer with regulated catalytic converter
STEERING HEAD ANGLE	63.4°	63.4°
TRAIL	119 mm	119 mm
WHEEL BASE	1,570 ± 10 mm	1,570 ± 10 mm
GROUND CLEARANCE	261 mm	296 mm
SEAT HEIGHT	860 mm	895 mm
TANK CAPACITY	approx. 19.5 litres/4 litres reserve	approx. 19.5 litres/4 litres reserve
WEIGHT (READY TO RACE)	approx. 209 kg (without fuel)	approx. 207 kg (without fuel)

ADVENTURE 2011



A look ahead reveals the next challenge. You are ready. With your KTM Adventure and the ideal equipment. With the best possible protection and dressed accordingly, you head off. Together with your PowerWear!



Today there are no clouds in the sky – instead, they're coming straight from the centre of the earth. But all you need is one look at the weather forecast to know that one needs to be ready for anything in Iceland. That's no problem with the wide range of KTM PowerWear – it has the perfect outfit for every expedition.

KTM POWERWEAR.

Those who sign up for real adventures need the best equipment – and that starts with the optimum clothing. And you are certain to find all your needs here in the versatile KTM PowerWear range. Tough Functional Wear that will cope with everything, comfortable Casual Wear that leaves nothing to be desired, and many more products that ensure the highest levels of convenience and safety. Further information on the extensive PowerWear range may be found in the special catalogue at your KTM dealer or at the simple click of a mouse at www.ktm.com.



Are you ready for the expedition of a lifetime? Do you dream of fantastic, exciting and unforgettable experiences on two wheels? Then grab a copy of the latest Adventure Tours brochure at your nearest KTM dealer. From motorbike adventure holidays in the remotest parts of the world, to biking weekends and short tours with experienced guides, to riding technique training courses where you will really make progress – with the wide-ranging offers from KTM Adventure Tours, you are always certain to ride away with the best. Choose the right one for you and enjoy pure adventure on two wheels!

KTM ADVENTURE TOURS.

POWERPARTS KTM 990 ADVENTURE.

As ever, special PowerParts are available for all KTM Adventure models, allowing the greatest possible levels of comfort, performance and safety to be achieved, even on the most extreme tours. More detailed information and the KTM PowerParts catalogue may be found at your nearest dealer!



ALARM SYSTEM



ERGO SEAT

CARBON PROTECTION



CASE SET



Every expedition requires 100% commitment – from you as well as from your KTM Adventure. So that absolutely nothing is left to chance when exploring extreme regions, KTM PowerParts, such as crash bars, are important companions.



No end in sight on this stage. That's exactly what you want. As no road is too long for you with the ergonomic seat on your Adventure. And when you reach your destination, the alarm system – likewise from the PowerParts range – takes care of everything.

POWERPARTS IN ACTION.

It's time to leave civilisation behind again and head off into the wilderness. You don't know what awaits you beyond the next bend or what surprises tomorrow's stage will bring. But you do know that you are best equipped for all eventualities – with KTM PowerParts. They guarantee additional safety for the most extreme of challenges, assure you the maximum level of power and performance, and not only on marathon stages do they make an essential contribution to riding comfort. Take what you need and show nature what an Adventure can do.

ADVENTURE 2011